

**Danger!**

# Pedal-Attached Motorized Bicycles



## What is a pedal-attached motorized bicycle?

- A bicycle equipped with both pedals and a motor, which can be ridden using by motor alone.
- A bicycle with a driving aid that exceeds assist ratio standards.



**Pedal-attached motorized bicycles are not bicycles!  
They are classified as general motorized bicycles or cars!!**

When riding a pedal-attached motorized bicycle, you must obey the same traffic rules as general motorized bicycles and cars, even if you only use it with pedals. These include having a driver's license, not driving on the sidewalk, and wearing a helmet.



## What you need before riding a pedal-attached motorized bicycle on a public road

**Check 01**

A driver's license for general motorized bicycles or cars



**Check 02**

A brake light, rearview mirror, and blinkers



**Check 03**

A displayed license plate



**Check 04**

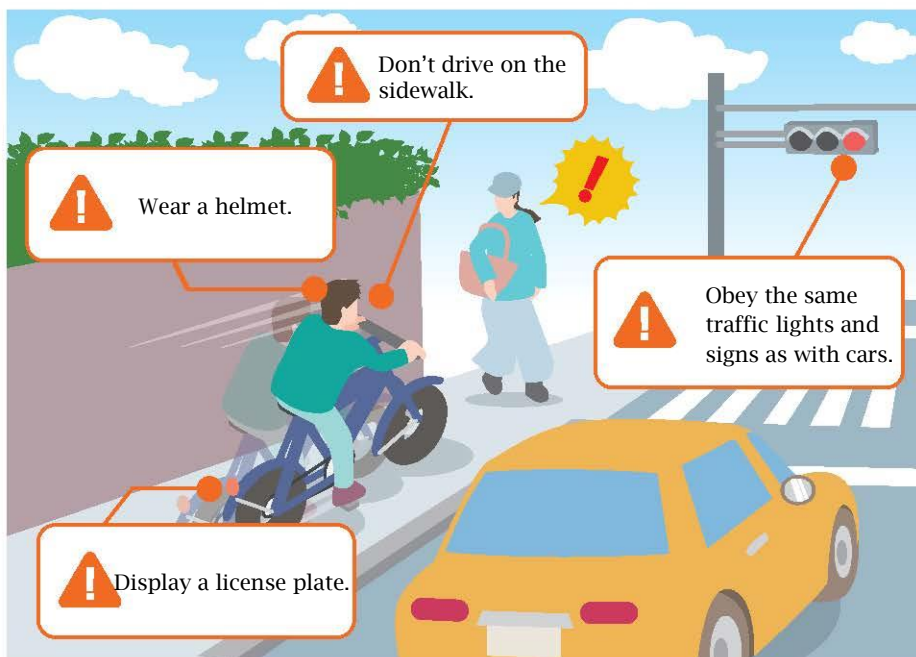
A compulsory automobile liability insurance



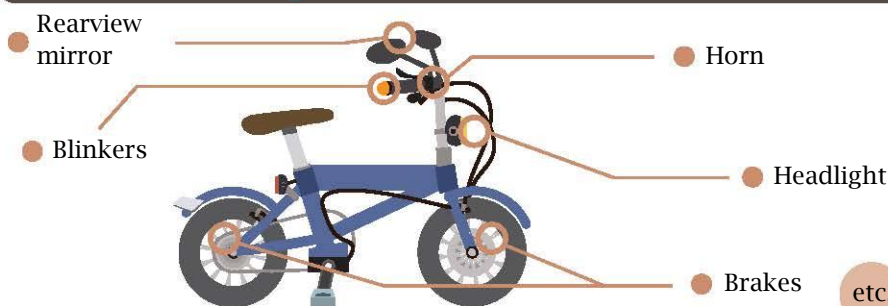
National Police Agency  
Saitama Prefectural Police



# Ignoring Traffic Laws is Illegal!



## Safety standards must be met.



## Bicycles that follow the bicycle traffic rules

Bicycles with electrical assist systems that are type-approved and bear the TS mark are subject to bicycle traffic rules. If you want to use (purchase) an electrical-assisted bicycle, choose one with a TS mark!



TS mark



Type-approved  
bicycle list